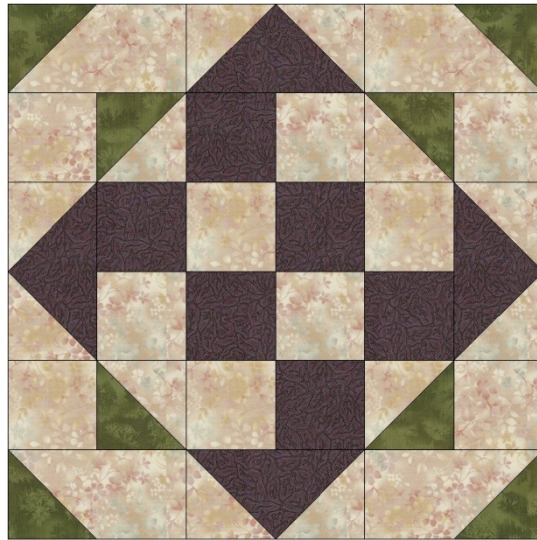


Persimmon Quilts



"Purple Sage" February 2014 – Block 6

Cutting Instructions:

- Purple..... (1) 6 ¼" square
(1) 3" x 19"
- Green..... (2) 3 ½" squares
(4) 3 " squares
- Grey..... (4) 3" x 5 ½"
(1) 3" x 19"
(2) 3 ½" square – draw a diagonal line on wrong side
(4) 3" squares
(4) 3 3/8" squares – draw a diagonal line on wrong side

Sewing Instructions:

Make the following unit, using previous clues method. Use (1) 3" x 5 ½" Grey and (1) 3" Green square.



Make 2



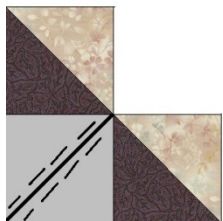
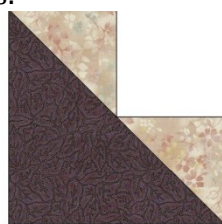
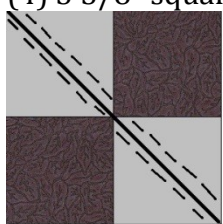
Make 2

Make HST using method from previous clues. Use (1) 3 1/2" Grey square and (1) 3 1/2" Green square. **Square up to 3"**



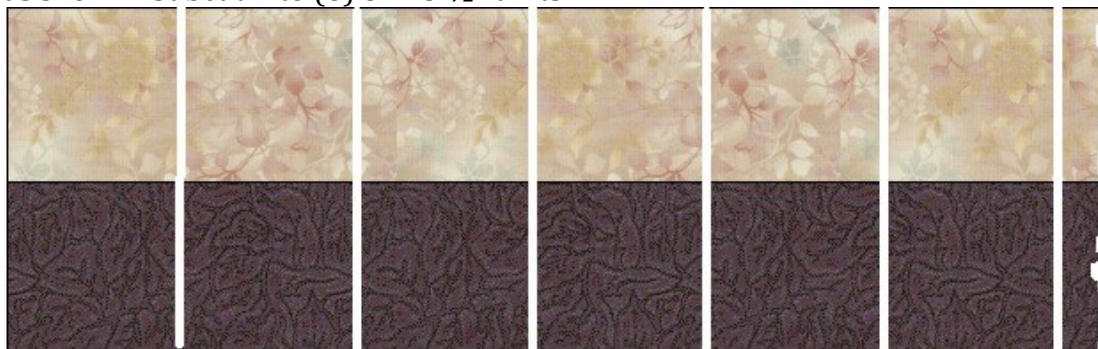
Make 4

Make FG using the above method. Use (1) 6 1/4" Purple square and (4) 3 3/8" squares.



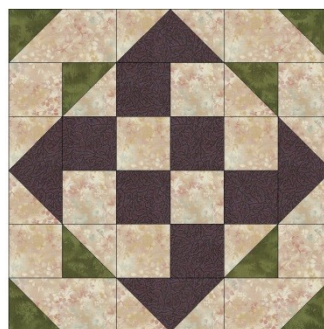
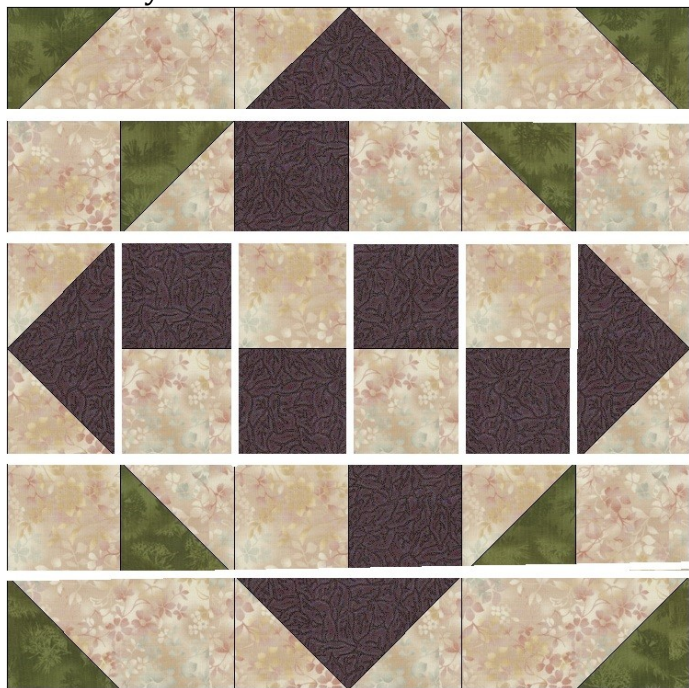
Make 4 Your FG should measure 3" x 5 1/2"

Sew (1) 3" x 19" Grey strip to (1) 3" x 19" Purple strip together lengthwise as shown. Subcut into (6) 3" x 5 1/2" units.



<- 3" ->

Assemble your block as shown:



Your block should measure 15 1/2" unfinished

Copyright 2013 - www.persimmonquilts.com