

Persimmon Quilts 2013/14 BOM



“Purple Sage” September 2013

Cutting Instructions:

Purple..... (1) 6 ¼” square
(4) 3 3/8” square – draw a diagonal line on wrong side
(4) 3” squares – draw a diagonal line on wrong side

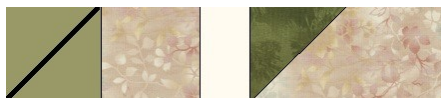
Green..... (4) 3” squares – draw a diagonal line on wrong side
(2) 3 ½” squares- draw a diagonal line on wrong side

Grey..... (4) 3” x 5 ½”
(1) 6 ¼” square
(1) 5 ½” square
(4) 3 3/8” squares – draw a diagonal line on wrong side
(2) 3 ½” squares
(4) 3” squares

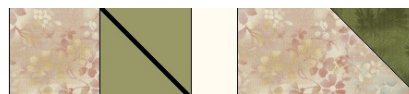
Sewing Instructions:

Place (1) 3” Green square on one end of
(1) 3” x 5 ½” Grey, right sides together, being
careful of placement as shown. Sew
on drawn line. Cut ¼” seam allowance, flip
back and press to Green.

Repeat process , but this time
place 3” Green square on the
opposite end, as shown:



Make 2



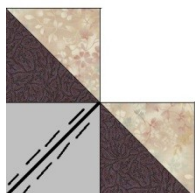
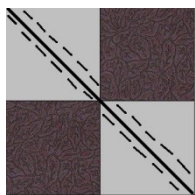
Make 2

Make Half Square Triangles by placing (1) 3 ½" Grey square on top of (1) 3 ½" Green square, right sides together. Sew ¼" on each side of drawn line. Cut apart on line, and press to Grey. **Square up to 3"**



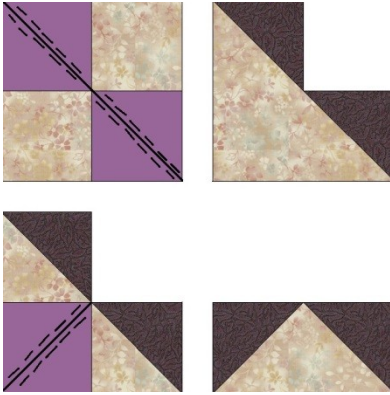
Make 4

Make Flying Geese the No Waste Method by placing (1) 3 3/8" Grey square in opposite corners on (1) 6 ¼" Purple square, right sides together as shown (they will slightly overlap). Sew ¼" on each side of drawn line. Cut apart on line, and press to Grey. Next, place (1) 3 3/8" Grey square on remaining corner. Sew ¼" on each side of drawn line. Cut apart on line, and press to Grey.



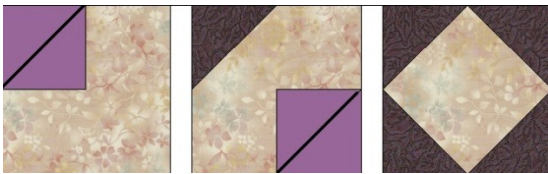
Make 4 Your FG should measure 3" x 5 ½"

Make Flying Geese using (1) 6 ¼" Grey square and (4) 3 3/8" Purple squares as shown:



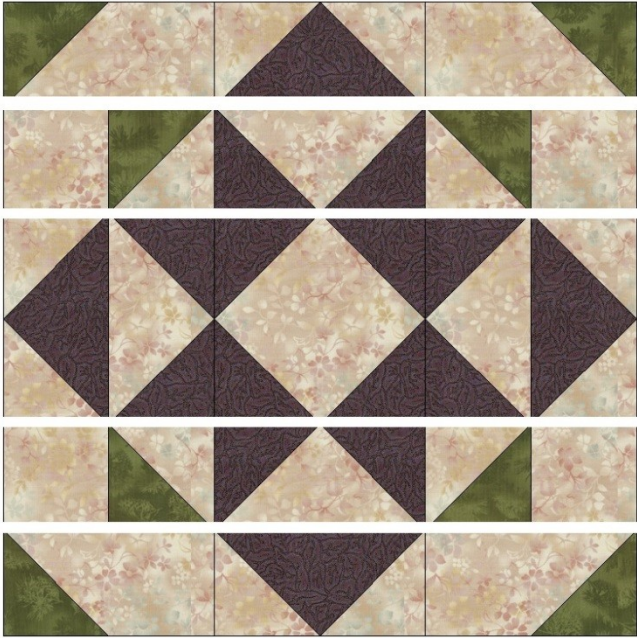
Make 4 Your FG should measure 3" x 5 1/2"

Place (1) 3" Purple square on one corner of (1) 5 1/2" Grey square, right sides together, being careful of placement as shown below. Sew on drawn line. Repeat in opposite corner, then lastly in remaining corners. Square up to 5 1/2" if needed

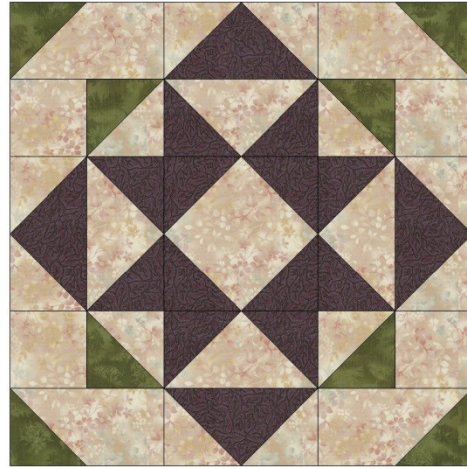


Make 1

Assemble your block as shown:



Copyright 2013 - www.persimmonquilts.com



Your block should measure 15 1/2"